



How to use a bar straightening machine MYH6-14 (manuals of MYH6-14 bar straightening machine)

- Before using the bar straightening machine, please read this operating manual carefully



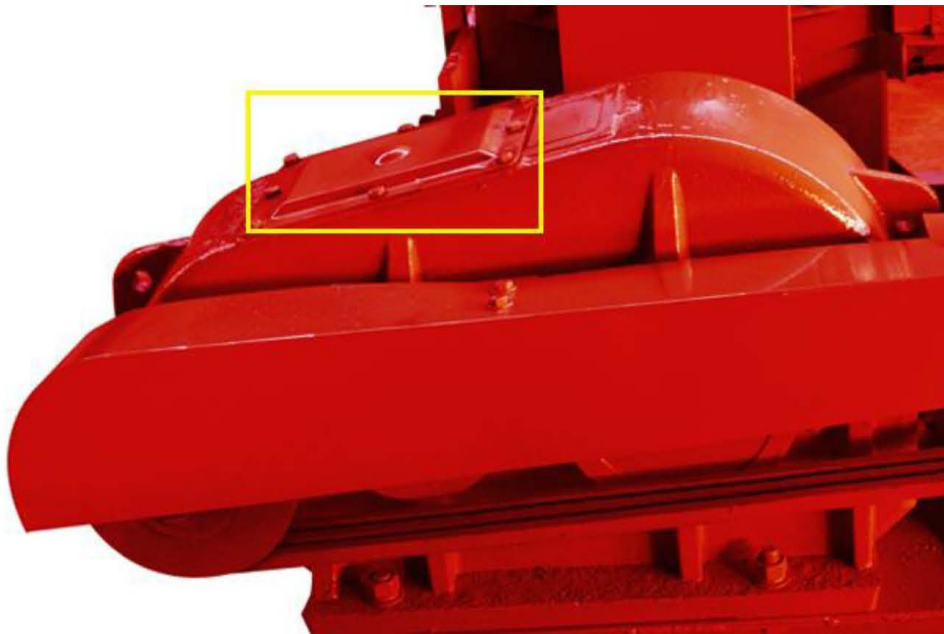
Specification of the bar straightening machine

- | | |
|---------------------|------------------|
| Machine Model | MYH6-14 |
| Straight Capacity | Ø6mm-Ø14mm |
| Straightening Motor | 9.5Kw(5.5Kw&4Kw) |
| Straightening speed | 35m/minute |
| GW/NW | 800Kg/750Kg |
| Package Dimension | 150*125*90cm |



Fill machine oil

- First of all, open oil hole cover on gears box, then fill 8kgs machine oil through oil hole, and contingent survey oil level
- And paint lubricating oil to gears and chain



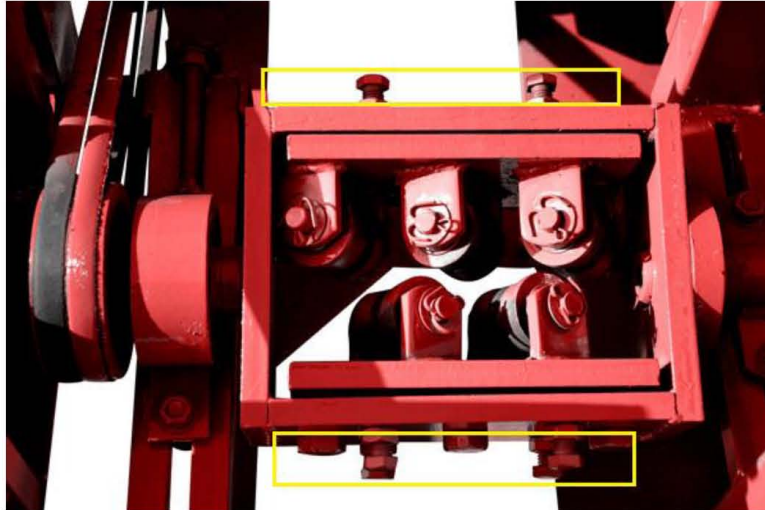
Commissioning

- Connect power line 380V three phase, 5.5Kw, if the machine motor is customized, do it as power required
- Since commissioning is ok, finally you can go ahead with heavy duty works



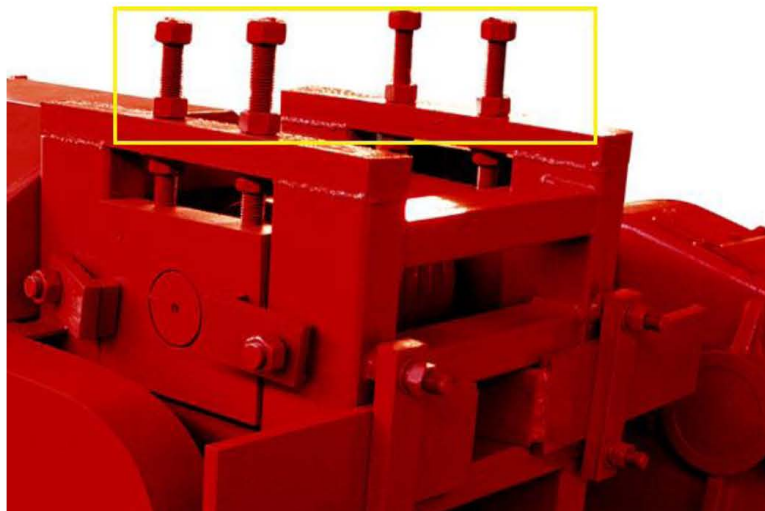
How to straightening different size rebar (6mm-14mm)

- Adjust the bolts which adapt to straightening rollers, make sure straightening rollers are flat and tidy, and touch rebar tightly,



Matters need attention (fault handling)

- Please attention the 4 bolts above import rollers and 4 bolts above export rollers, operator need to adjust them as proper situation, not too tight and not too loose,
- If too tight, rollers will squeeze bar shape changing, not round.
- And not too loose, if too loose, bar will shake and switch, even hurt people
- What is a proper situation, judgement standard, bar pass through smooth going, straight and no shape changing





Shuanglong Machinery

www.RebarSmachine.com

info@RebarSmachine.com

