



How to use a rod straightening machine MY10-25 (manual of MY10-25 rod straightening machine)

- Before using the iron rod straightening machine, please read this operating manual carefully



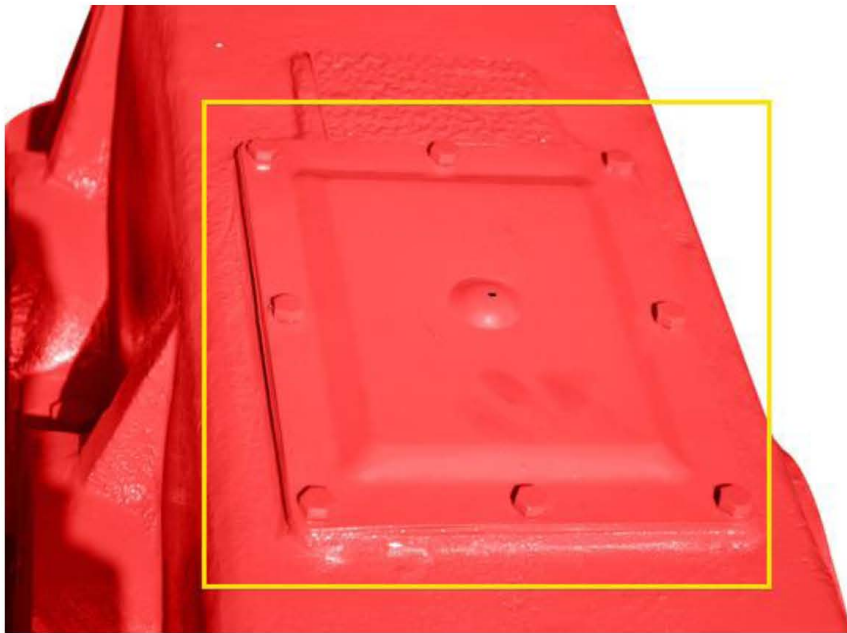
Specification of scrap bar straightening machine

- | | |
|---------------------|---------------|
| Machine Model | MY10-25 |
| Straight Capacity | Ø10mm-Ø25mm |
| Straightening Motor | 15Kw |
| Straightening speed | 20m/minute |
| GW/NW | 900Kg/850Kg |
| Package Dimension | 138*113*133cm |



Fill machine oil

- First of all, open oil hole cover on gears box, then fill 25kgs machine oil through oil hole, and contingent survey oil level



Commissioning

- Connect power line three phase, 15Kw, if you order a customized machine, do it as the power required,
- Since commissioning is ok, finally you can go ahead with heavy duty works



Input holes

- As the picture indicate rod size for passing through,

